

Start

A-maze-ing!

Start at the top of the Atlas V rocket and try to find your way to the bottom of the rocket flames!

Down

- 1. A launch vehicle for leaving Earth
- 2. The JPSS-2 spacecraft is powered by this type of energy from the sun
- 3. The surrounding conditions in which animals, plants or people live

Across

- 4. This mission's type of orbit (north/south)
- 5. A circular storm that forms in the ocean
- 6. An event where a rocket leaves the ground
- 7. The scientific study of weather
- 8. The state of the atmosphere as it relates to heat, dryness, sunshine, wind, etc.
- 9. The acronym for NASA's Low-Earth Orbit Flight Test of an Inflatable Decelerator

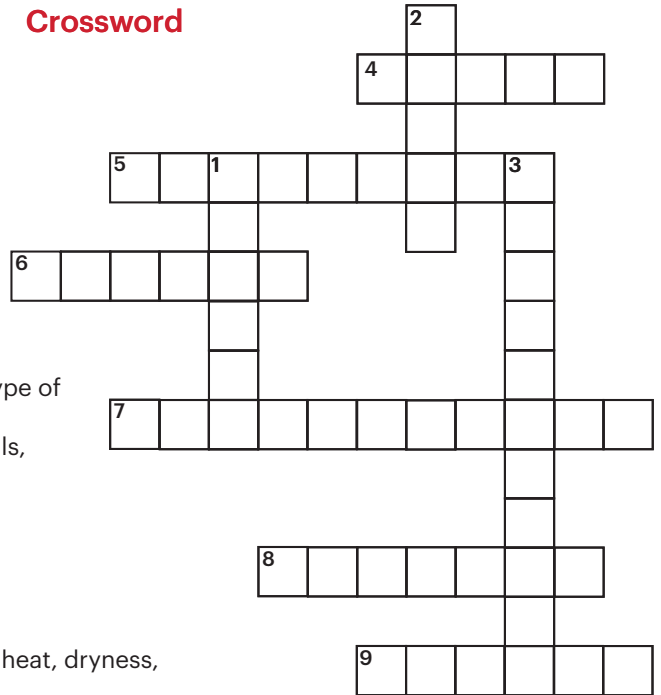
Word Find

F Z Y T H S A N E Z S
 P C E N T A U R W B F
 D E U S H N I E R V T
 R A U F Z F A W L H T
 A R H Z J T N A S A H
 Z T G S H O K E A T G
 Z H F E A H T E A L U
 I S R A F I O Z B A O
 L V E T B A R R Z S R
 B H U R R I C A N E D
 E O O C L O T X F T P

ATLAS ULA HURRICANE BLIZZARD
 NASA CENTAUR DROUGHT WEATHER
 NOAA EARTH FIRE ORBIT

Finish

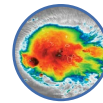
Crossword



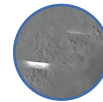
Answer Key: Down: 1. Rocket 2. Solar 3. Environment
 Across: 1. Polar 2. Hurricane 3. Launch
 4. Meteorology 5. Weather 6. LOFTID

Unscramble

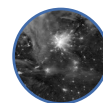
Unscramble the word to see what is in the JPSS-1/NOAA-20 space image. The JPSS-1 spacecraft launched on a United Launch Alliance Delta II rocket on November 18, 2017.



1. urichanre _____



2. rfie _____



3. igtlninhg _____



4. torsm _____

5. tciy glhits _____

6. liandss _____

7. nswo _____

Answer Key: 1. Hurricane 2. Fire 3. Lightning
 4. Storm 5. City Lights 6. Islands 7. Snow